

# ASSESSOR'S PLAT NO. 12

A PART OF THE N.E. QUARTER  
OF SEC. 30, T. 2. S., R. 6. E.

IN THE CITY OF ANN ARBOR,  
WASHTENAW COUNTY, MICHIGAN

Oct 16-1930  
J. L. Hume

## SURVEYOR'S CERTIFICATE

I hereby certify that the plat hereon delineated is a correct one and that permanent metal monuments of not less than one inch in diameter and fifteen inches in length set in a concrete base at least four inches in diameter and forty eight inches in depth have been placed at the points marked thus:  $\odot$  as thereon shown at all angles in the boundaries of the land platted, at all the intersections of streets, intersections of alleys or of streets and alleys and at the intersections of streets and alleys with the boundaries of the plat as shown on said plat.

*Geo. H. Sandburgh*  
Registered Civil Engineer

## CERTIFICATE OF MUNICIPAL APPROVAL

This plat was approved by the Common Council of the City of Ann Arbor, Washtenaw County, Michigan at a meeting held May 14 1930

*W. W. Perry*  
Clerk

This plat was approved the Board of Public Works, of the City of Ann Arbor, Washtenaw County, Michigan at a meeting held May 19 30

*J. W. Perry*  
Clerk

## CERTIFICATE OF APPROVAL BY BOARD OF COUNTY AUDITORS

Approved by the Board of County Auditors of Washtenaw County, Michigan this 3rd day of October 1930

*J. O. Gashung*  
Chairman  
*James W. Fowler*  
Clerk

Witness

Assessor's Plat No. 12

Oct 30 1930

at 8 o'clock

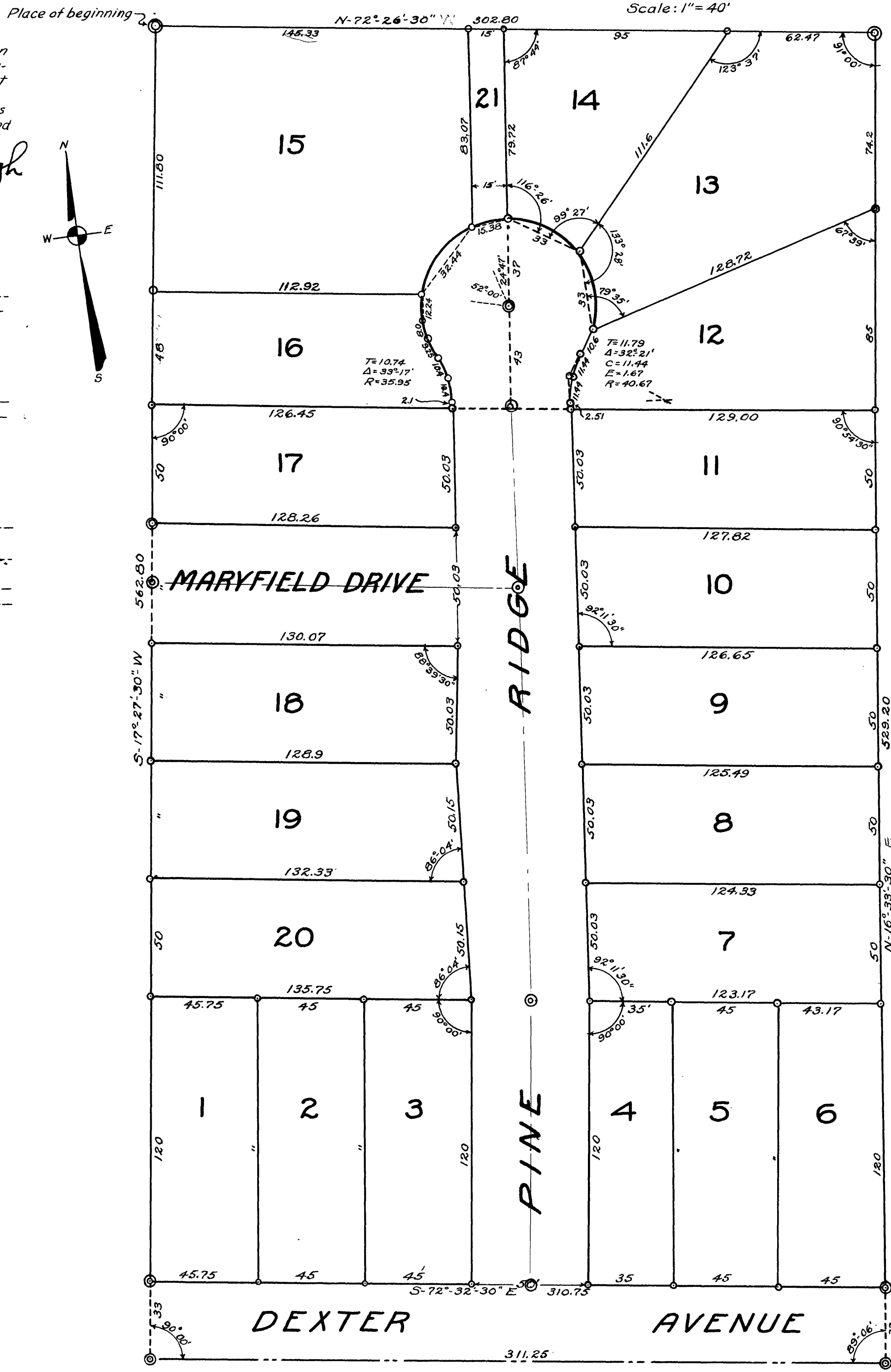
*John L. Cummings*

Oct 16-1930

J. L. Hume

Oct 21-1930

J. L. Hume



## DEDICATION

KNOW ALL MEN BY THESE PRESENTS: That I, Herbert W. Crippen, Assessor of the City of Ann Arbor, Washtenaw County, Michigan by virtue of authority in me vested by Section 51, Act 172, P.A. of 1929 having been duly authorized by the Common Council of the City of Ann Arbor, Washtenaw County, Michigan, have caused the land described in the annexed plat to be surveyed, laid out, and platted to be known as "ASSESSOR'S PLAT NO. 12" of the City of Ann Arbor, Washtenaw County, Michigan, being a part of the Northeast Quarter of Section 30, T. 2. S., R. 6. E., Washtenaw County, Michigan, and that the streets and alleys as shown on said plat are hereby dedicated to the use of the Public.

Witnesses:  
*H. W. Crippen*  
Assessor of the City of Ann Arbor  
Washtenaw Co., Michigan.

## ACKNOWLEDGEMENT STATE OF MICHIGAN COUNTY OF WASHTENAW } SS

On this 20th day of Sept, A.D. 1930 before me, a Notary Public, in and for said county personally came the above named Herbert W. Crippen, Assessor of the City of Ann Arbor, Washtenaw County, Michigan, known to me to be the person who executed the above dedication, and acknowledged the same to be his free act and deed as such Assessor.

*Ernest M. Worsater*  
Notary Public in and for Washtenaw Co., Michigan.

My Commission expires Sept. 29, 1931

## DESCRIPTION

Commencing at the North Quarter Corner of Section 30, T. 2. S., R. 6. E., thence S-89° 25' 40" E, 310.9 feet to an iron pipe, thence S-01° 24' 30" E, 605.3 feet to an iron pipe, thence S-72° 30' 00" E, 257.0 feet to an iron pipe marking the place of beginning, thence S-17° 27' 30" W, 562.80 feet to an iron pipe on the N property line of Dexter Avenue, thence S-72° 32' 30" E, 310.75 feet along the N line of Dexter Avenue, thence N-16° 33' 30" E, 529.20 feet, thence N-72° 26' 30" W, 302.80 feet to the Place of beginning.

1 OF 1  
ASSESSOR'S PLAT NO. 12  
PAGE 130  
10/16/1930

Checked 10/19/30  
Index 10/19/30