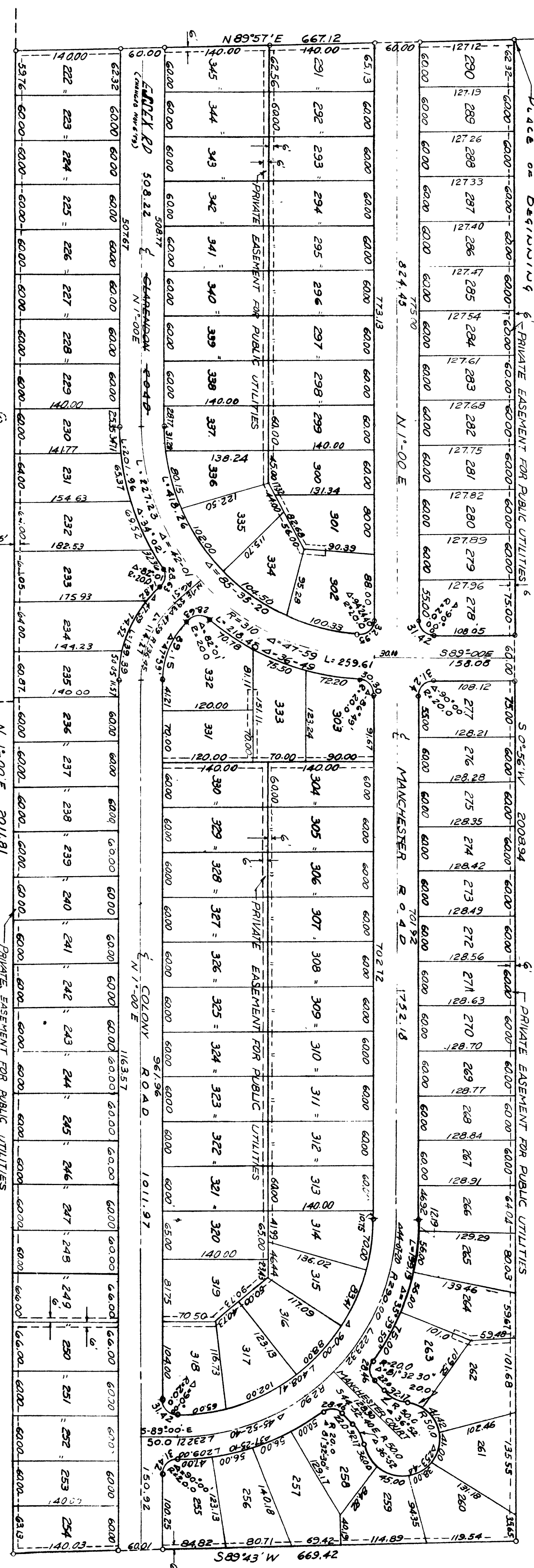


JUL 9 1956

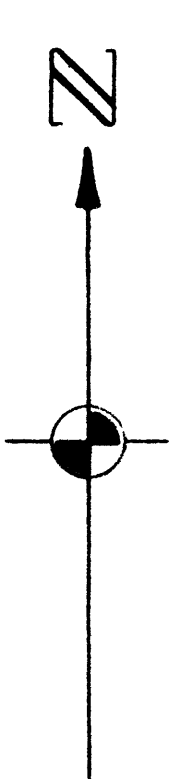
ANN ARBOR WOODS #2

EW 1/4 LINE SEC. 3
589° 57' W 667.14

Containing Section 3
T 3 S, R 6 E



KIMBERLEY HILLS
SUBDIVISION



NOT PLATTED

NOT PLATTED

ANN ARBOR WOODS No. 3
A SUBDIVISION OF PART OF THE SW 1/4 OF SEC. 3
T 3 S - R 6 E, CITY OF ANN ARBOR, WASHTENAW
COUNTY, MICHIGAN
SCALE 1" = 100'
0 100 200 300
ALL DIMENSIONS IN FEET AND DECIMALS THEREOF
SURVEY BY ATWELL-HICKS INC.

NOT PLATTED

SHEET 1 OF 2

JUL 9 1956

DEDICATION

KNOW ALL MEN BY THESE PRESENTS, that I Sibley W. Hoobler, Trustee, under an Agreement of Trust, dated December 27, 1952 as amended and Rouge Building Co. a Michigan corporation by Stephan F. Slavik, President, and Joseph F. Slavik, Secretary, as proprietors, have caused the land embraced in the annexed plat to be surveyed, laid out and platted to be known as ANN ARBOR WOODS NO. 3 a Subdivision of part of the SW 1/4 of Sec. 3 T3S - R6E, City of Ann Arbor, Washtenaw County, Michigan and that the roads and courts as shown on said plat are hereby dedicated to the use of the public.

Signed and Sealed in the Presence of:

Lyle O. Paige (Witness) Sibley W. Hoobler
R. S. Nielsen (Witness)

Signed and Sealed in the Presence of: Rouge Building Company by:-

John Ziga Sr. (Witness) Stephan F. Slavik President
Nancy Anne Myers (Witness) Joseph F. Slavik Secy-Treas.

ACKNOWLEDGMENT

STATE OF MICHIGAN)
County of Washtenaw) ss.

On this 21st day of March, 1956, before me a Notary Public in and for said County, personally came the above named Sibley W. Hoobler known to me to be the person who executed the above dedication, and acknowledged the same to be his free act and deed.

John Ziga Sr. Notary Public, Washtenaw County
My Commission expires 2-4-60

ACKNOWLEDGMENT

STATE OF MICHIGAN)
County of Washtenaw) ss.

On this 21st day of March, 1956, before me, John Ziga Sr., a Notary Public in and for said county appeared Stephan F. Slavik and Joseph F. Slavik to me personally known, who being each by me duly sworn did say that they are the President and Secretary respectively of the Rouge Building Co. a Michigan corporation, and that the seal affixed to said instrument is the corporate seal of said corporation and that said instrument was signed and sealed in behalf of said corporation by authority of its Board of Directors and the said Stephan F. Slavik and Joseph F. Slavik acknowledged said instrument to be the free act and deed of said corporation.

John Ziga Sr. Notary Public, Washtenaw County
My Commission expires 2-4-60

ANN ARBOR WOODS No. 3

A SUBDIVISION OF PART OF THE SW 1/4 OF SEC. 3 T3S - R6E, CITY OF ANN ARBOR, WASHTENAW COUNTY, MICHIGAN



ALL DIMENSIONS IN FEET AND DECIMALS THEREOF
ALL DISTANCES ON CURVES ARE ARC LENGTHS
SURVEY BY ATWELL-HICKS INC.

CITY CLERK'S CERTIFICATE

Office of City Clerk, City of Ann Arbor
I hereby certify, that the width and depth of lots shown on this plat are in compliance with rules and regulation of the City of Ann Arbor and the requirements as to width and depth of Sec. 30 of Act 172, Public Acts of 1929 as amended by Act 186 Public Acts of 1954.

Fred J. Looker (Clerk)

CERTIFICATE OF APPROVAL BY THE CITY PLANNING COMMISSION

This plat was approved by the PLANNING COMMISSION of the City of Ann Arbor, Michigan, at a meeting held on the 24th day of APRIL, 1956.

John E. Swisher, Jr. (Chairman)
Leo P. Meyers (Secretary)

APPROVAL BY COUNTY PLAT BOARD

This plat was approved on the 28th day of June, 1956 by the Washtenaw County Plat Board.

Patricia Newkirk Hardy (County Register of Deeds)
J. Martin Rempp (Auditor)
Adolph F. Gross (Auditor)
Herbert G. Loeffler (Auditor)

ATTORNEY'S OPINION

I hereby certify from an examination of... of title to the lands described in this plat that I find no outstanding interest, including mineral rights, other than in the parties joining in the dedication.

Date: 7/5/56
WILLIAM F. NERN (Attorney)

SHEET 2 OF 2
DESCRIPTION OF LAND PLATTED

The land embraced in the annexed plat of ANN ARBOR WOODS NO. 3 a Subdivision of part of the SW 1/4 of Sec. 3 T3S - R6E, City of Ann Arbor, Washtenaw County, Michigan is described as follows:

COMMENCING at the center of Sec. 3 T3S - R6E, City of Ann Arbor, Washtenaw County, Michigan; thence along the E & W 1/4 line of said section S 89° - 57' W 667.14 feet for a PLACE OF BEGINNING; thence S 0° - 56' W 2008.94 feet; thence S 89° - 43' W 669.42 feet; thence N 1° - 00' E 2011.81 feet; thence along the E & W 1/4 line of said section N 89° - 57' E 667.12 feet to the place of beginning, containing 124 lots numbered 222 to 345 inclusive.

SURVEYOR'S CERTIFICATE

I hereby certify that the plat hereon delineated is a correct one and that permanent metal monuments consisting of bars not less than one-half inch in diameter and 36 inches in length, or shorter bars of not less than one-half inch in diameter lapped over each other at least 6 inches with an over-all length of not less than 36 inches, encased in a concrete cylinder at least 4 inches in diameter and 36 inches in depth have been placed at points marked thus () as thereon shown at all angles in the boundaries of the land platted, at all the intersections of lines of streets, and at the intersections of lines of streets with the boundaries of the plat as shown on said plat.

Robert J. Jagow Registered Land Surveyor # 6998

COUNTY TREASURER'S CERTIFICATE

Office of County Treasurer, Washtenaw County
I hereby certify, that there are no tax liens or titles held by the State on the lands described hereon, and that there are no tax liens or titles held by individuals on said lands, for the five years preceding the 27th day of June, 1956, and that the taxes for said period of five years are all paid, as shown by the records of this office. This certificate does not apply to taxes, if any, now in process of collection by township, city or village collecting officers.

W. F. Verner (County Treasurer)

MUNICIPAL APPROVAL

This plat was approved by the COMMON COUNCIL of the City of Ann Arbor at a meeting held May 11, 1956.

Fred J. Looker (Clerk)

FILED IN AUDITOR GENERAL'S DEPT.
Date July 9, 1956
Date July 12, 1956
EXAMINED AND APPROVED
Date July 9, 1956
By D. K. MacEchoy Plat Engineer

COPY
Register's Office
Washtenaw County, ss.
Plat of Ann Arbor Woods No. 3
City of Ann Arbor
was Recorded this 10th day of July, A.D., 1956 at 11:00 clock
A.M. in Liber 42 of Plate
on Page 45-46
Patricia Newkirk Hardy Register of Deeds
ORIGINAL ON FILE

2 OF 2
ANN ARBOR WOODS NO. 3 SUB.
LIBER 42 PAGE 45-46
06/10/1956