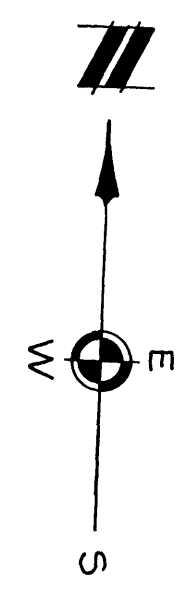


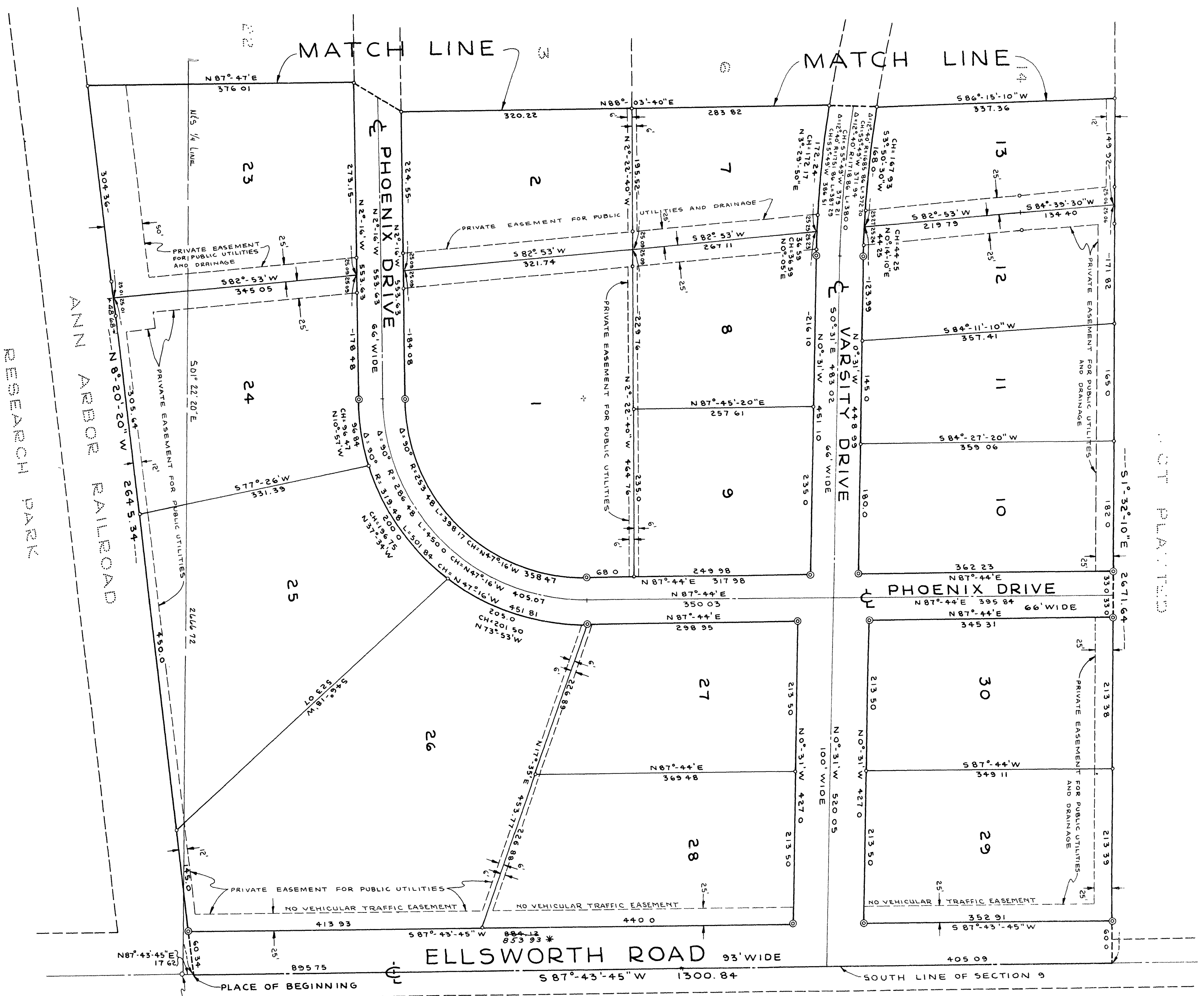
COPY

ANN ARBOR INDUSTRIAL PARK
A SUBDIVISION OF PART OF THE SE 1/4 AND PART OF THE SW 1/4 OF SECTION 9, T35, R6E, CITY OF ANN ARBOR, WASHINGTON COUNTY, MICHIGAN

ALL DIMENSIONS IN FEET AND DECIMALS THEREOF
ALL DIMENSIONS ON CURVES ARE ARC LENGTHS
PREPARED AND DRAFTED BY ATWELL-HICKS, INC.
114 N. RTH. FIRST ST., ANN ARBOR, MICHIGAN

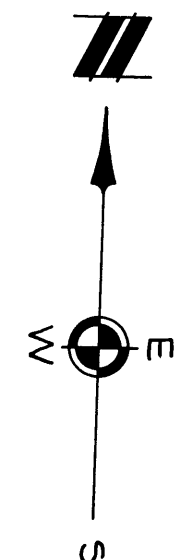


NOT PLATTED



* CORRECTED AS PER
ATWELL-HICKS 10/27/69

ANN ARBOR SOUTHBELT EXPRESSWAY I-94
LIMITED ACCESS HIGHWAY - NO DIRECT INGRESS OR EGRESS PERMITTED



ANN ARBOR INDUSTRIAL PARK
COPY

A SUBDIVISION OF PART OF THE SE 1/4 AND PART OF THE SW 1/4 OF SECTION 9, T35S, R6E, CITY OF ANN ARBOR, WASHTENAW COUNTY, MICHIGAN

ALL DIMENSIONS IN FEET AND DECIMALS THEREOF
ALL DIMENSIONS ON CURVES ARE ARC LENGTHS
PREPARED AND DRAFTED BY ATWELL-HICKS, INC.
114 NORTH FIRST ST. ANN ARBOR, MICHIGAN

SCALE: 1" = 100'
0 100 200 300

NOT PLATTED

