

For Deed see Liber 299 page 323

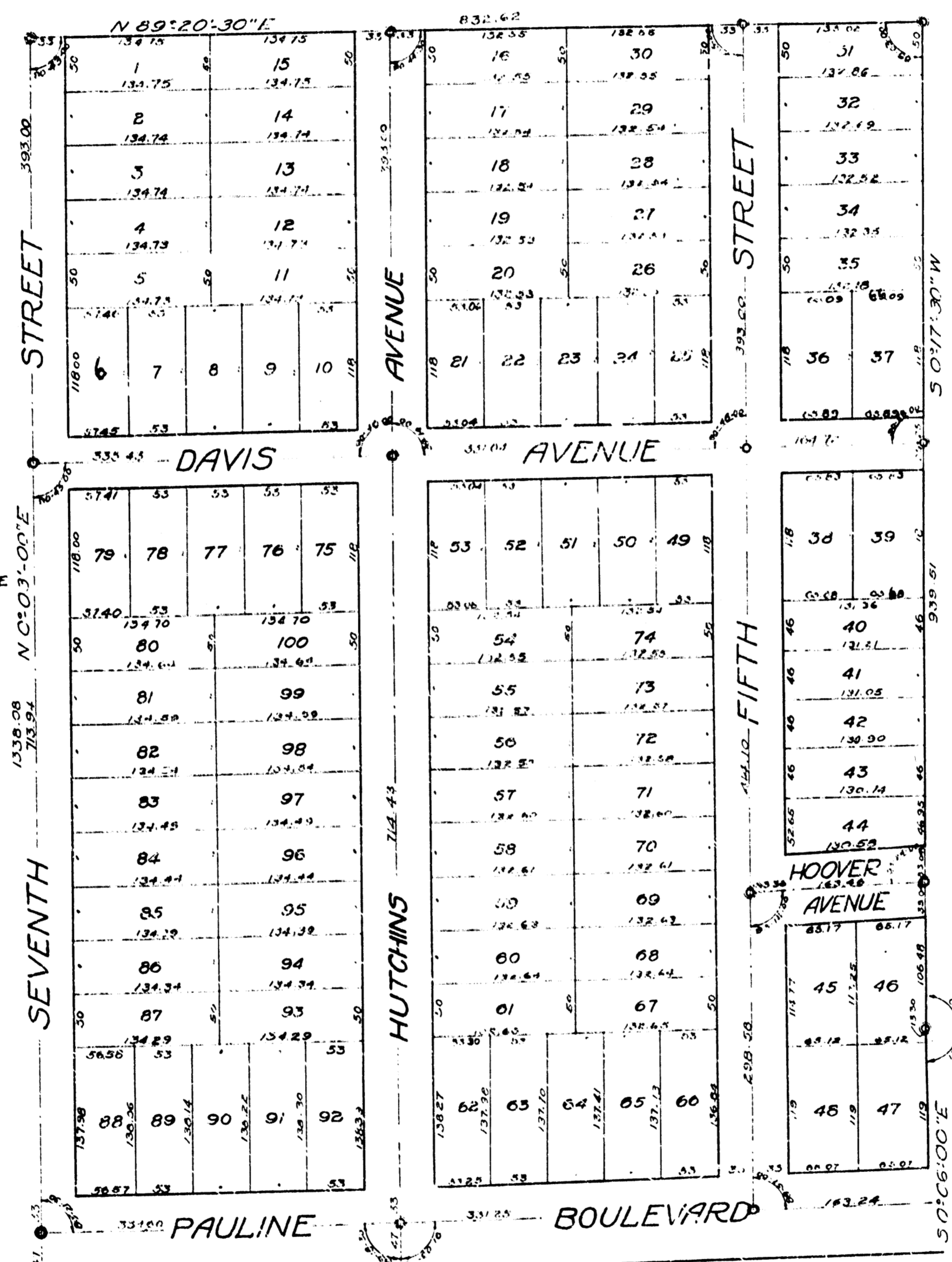
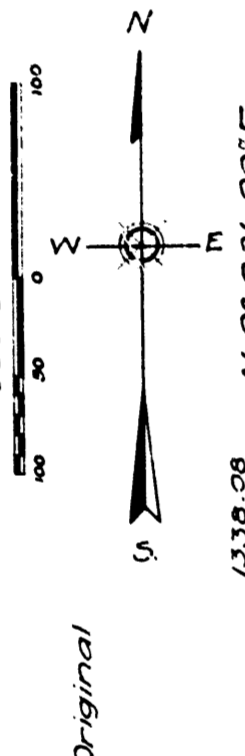
See Liber 1254 Page 281

2 Sheets
 Sheet No 1

Sept 15-1917
 Geo. L. Hoover

PLAT OF
 ALLMENDINGER HEIGHTS ADDITION
 IN THE
 CITY OF ANN ARBOR

Washtenaw County, Michigan
 Part of N.W. 1/4 of Section 32, T2S, R6E
 Scale 1"=100'



**CERTIFICATE OF APPROVAL
 BY THE COMMON COUNCIL**
 The plat was approved by the Common Council of the City of Ann Arbor, Washtenaw County, State of Michigan, at a meeting held September 17, 1917.

COUNTY TREASURERS CERTIFICATE
 OFFICE OF COUNTY TREASURER
 WASHTENAW COUNTY, MICH.
 I hereby certify, that there are no tax liens or titles held by the State on the land described below, and that there are no tax liens or titles held by individuals on said lands for five years preceding the date of this certificate, and that the taxes for said period of five years are all paid, as shown by the records of this office.

DESCRIPTION

Beginning at the west quarter post of Section 32, town two South, range six East, Meridian of Michigan; thence north along the west line of said section 32, 1338.27 feet; thence N89°07'30"E 494.82 feet; thence N0°03'00"E along the line of Seventh St. 1338.08 feet to the north line of Section 32; thence N89°20'30"E along the north line of section 32, 832.62 feet; thence S0°17'30"W 939.51 feet; thence S0°06'00"E 395.61 feet; thence S0°05'00"W 1088.36 feet; thence S88°55'00"W 1322.91 feet to the place of beginning.

Dated September 11, 1917
 Geo. L. Hoover, County Treasurer

**CERTIFICATE OF APPROVAL
 BY THE COUNTY AUDITORS**

This plat was approved on the 25th day of August, 1917, by the Board of County Auditors, of the County of Washtenaw, State of Michigan.

Pauline Hoover
 Allmendinger Heights Addition
 September 17, 1917
 Geo. L. Hoover

**CERTIFICATE OF APPROVAL
 BY BOARD OF PUBLIC WORKS**

This plat was approved by the Board of Public Works of the city of Ann Arbor, of the County of Washtenaw, State of Michigan, at a meeting held September 17, 1917.

Geo. L. Hoover, Clerk

SURVEYOR'S CERTIFICATE

I hereby certify that the plat hereon delineated is a correct one, and that permanent monuments, consisting of iron pipes, three-quarter of an inch in diameter and two-foot long, have been planted at all points marked thus \odot , and that at all points marked thus \circ , iron pipe as above surrounded with brick or stone have been planted as thereon shown at all angles in the boundaries of the land platted, and at all intersections of streets or alleys and alleys.

W. H. Powell, Surveyor

DEDICATION

Know all Men by These Presents, that we, George Franklin Allmendinger, as proprietor, and Pauline Hoover, his wife, have caused the land embraced in the annexed plat to be surveyed, laid out and platted to be known as ALLMENDINGER HEIGHTS ADDITION in the city of Ann Arbor, Washtenaw County, State of Michigan, and that the streets and alleys as shown on said plat are hereby dedicated to the use of the public.

George Franklin Allmendinger (L.S.)
 Pauline Hoover (L.S.)

Signed and sealed in the presence of
 Geo. L. Hoover (L.S.)
 Alan C. W. (L.S.)

STATE OF MICHIGAN }
 County of Washtenaw } ss

On this 14th day of June, 1917, before me, William L. Mack, a Notary Public in and for said county, personally came the above named George Franklin Allmendinger and Pauline Hoover, his wife, and known to me to be the persons who executed the above dedication, and acknowledged the same to be their free act and deed.

William L. Mack
 Notary Public, Washtenaw Co., Mich.
 My Commission expires April 9, 1919

DESCRIPTION OF LAND PLATTED.

The land embraced in the annexed plat of Allmendinger Heights Addition is described as follows:
 Beginning at the west quarter post of Section 32, town two South, range six East Meridian of Michigan; thence north along the west line of said section 32, 1338.27 feet; thence N89°07'30"E 494.82 feet; thence N0°03'00"E along the line of Seventh St. 1338.08 feet to the north line of section 32, thence N89°20'30"E along the north line of section 32, 832.62 feet; thence S0°17'30"W 939.51 feet; thence S0°06'00"E 395.61 feet; thence S0°05'00"W 1088.36 feet; thence S88°55'00"W 1322.91 feet to place of beginning.

2 Sheets
Sheet No. 2.

FLAT OF ALLMENDINGER HEIGHTS ADDITION IN THE

CITY OF ANN ARBOR
Washtenaw County, Michigan.
Part of NW 1/4 of Section 32, T25, R6E
Scale 1"=100'

Original

Note: - All dimensions are in feet and decimals.

