

AGER & FINKBEINER SUBDIVISION

A part of the NW 1/4 of Section 32, T2S, R6E,
City of Ann Arbor, Washtenaw Co., Michigan

Oct 9-1929
Fu L. Hurrey

10/11/1929
 FINKBEINER SUBDIVISION
 LIBER 6 PAGE 41

DEDICATION

KNOW ALL MEN BY THESE PRESENTS,
That we, William Ager, a married man and Zita F. Ager, his wife and Harold J. Finkbeiner and Susan Finkbeiner, his wife, as proprietors have caused the land embraced in the annexed plat to be surveyed, laid out and platted to be known as, "Ager & Finkbeiner Subdivision" a part of the NW 1/4 of Section 32, T2S, R6E, City of Ann Arbor, County of Washtenaw, State of Michigan, and that streets as shown on said plat are hereby dedicated to the use of the public.

Signed and Sealed in Presence of
 William Ager - LS
 Zita F. Ager - LS
 Harold J. Finkbeiner - LS
 Susan Finkbeiner - LS
 Witnesses: John L. Cunningham
 Notary Public

STATE of MICHIGAN } ss.
 County of Washtenaw }

On this 24th day of August 1929 before me a Notary Public in and for said county, personally came the above named William Ager and Zita F. Ager, his wife, and Harold J. Finkbeiner and Susan Finkbeiner, his wife, known to me to be the persons who executed the above dedication and acknowledged the same to be their own free act and deed.

Jay M. Payne
 Notary Public Washtenaw Co., Mich.

My Commission Expires Jan. 6th 1931

SURVEYOR'S CERTIFICATE

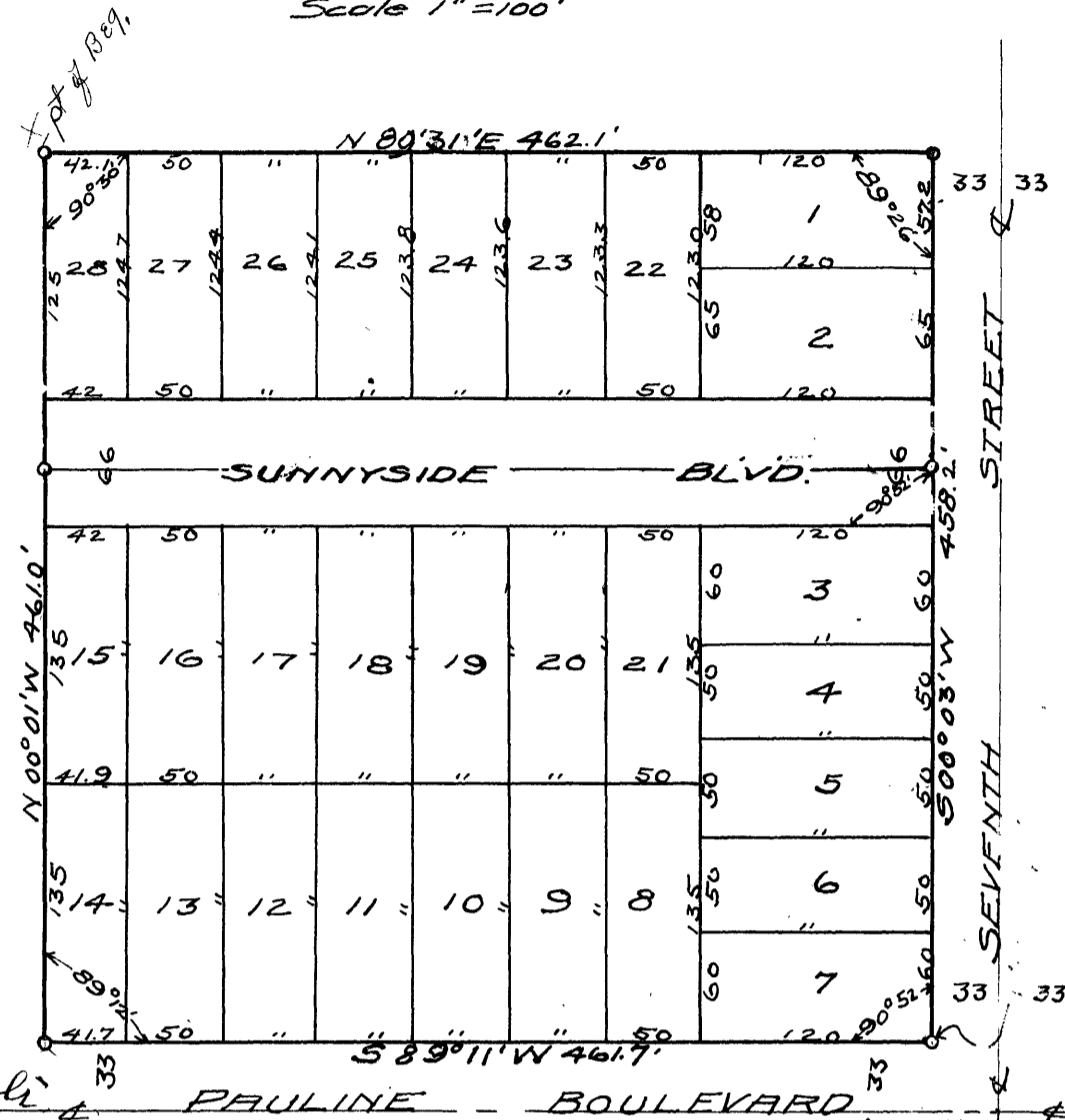
I hereby certify that the plat hereon delineated is a correct one and that permanent metal monuments of not less than one inch in diameter and fifteen inches in length set in a concrete base of at least four inches in diameter and forty-eight inches in depth have been placed at points marked thus o as thereon shown at all angles in the boundaries of the land platted, and at the intersections of streets with the boundaries of the plat as shown on said plat.

George Walterhouse
 Registered Civil Engineer
 April 1929.

Oct 9-1929
 Fu L. Hurrey

Oct 14-1929
 Fu L. Hurrey

Scale 1"=100'



NOTE

All dimensions are given in feet and decimals thereof.

COUNTY TREASURER'S CERTIFICATE RELATING TO TAXES.

Office of County Treasurer, Washtenaw County.

I hereby certify, that there are no tax liens or titles held by the State on the lands described below, and that there are no tax liens or titles held by individuals on said lands, for the five years preceding the 24th day of August 1929 and that the taxes for said period of five years are paid, as shown by the records of this office.

Being a part of the NW 1/4 of Section 32, T2S, R6E, City of Ann Arbor, County of Washtenaw, State of Michigan.

Frank H. Wickner
 County Treasurer.

DESCRIPTION

Beginning at a point on the section line between sections 31 and 32, 616.6 ft. south of the corner common to sections 29, 30, 31 and 32; thence N 89° 31' E 462.1 feet; thence S 00° 03' W 458.2 ft; thence S 89° 11' W 761.7 feet; thence N 00° 01' W 461.0 feet to the place of beginning containing 5 Acres more or less being a part of the NW 1/4 of Section 32, T2S, R6E, City of Ann Arbor, Washtenaw County, Michigan.

CERTIFICATE of MUNICIPAL APPROVAL

This plat was approved by the Common Council of the City of Ann Arbor at a meeting held October 7 1929.

Fred Paty
 City Clerk

CERTIFICATE of APPROVAL BY THE COUNTY BOARD

This plat was approved on the 28th day of August 1929.

Cary M. Gray
 Judge of Probate
Frank H. Wickner
 County Treasurer

CERTIFICATE of APPROVAL BY THE BOARD of COUNTY AUDITORS

Approved by the Board of County Auditors of Washtenaw County, Michigan, this 5 day of Sept 1929.

L. O. Washburn
 Chairman
Walter M. Groulx
Edwin L. Brown

CERTIFICATE of APPROVAL BY THE BOARD of PUBLIC WORKS

This plat was approved by the BOARD of PUBLIC WORKS, City of Ann Arbor September 18 1929.

Fred Paty
 City Clerk