

**"A.T. BIRK'S SUBDIVISION,"**

A PART OF NORTHWEST QUARTER, SECTION 32, T. 2 S., R. 6 E.,  
CITY OF ANN ARBOR, WASHTENAW COUNTY, MICHIGAN.  
Scale 1 in. = 60 ft.



DEDICATION: KNOW ALL MEN BY THESE PRESENTS, That we, August T. Birk and Jennie E. Birk, his wife, as proprietors, have caused the land embraced in the annexed plat to be surveyed, laid out and platted, to be known as "A.T. BIRK'S SUBDIVISION," a part of northwest quarter, section 32, T. 2 S., R. 6 E., City of Ann Arbor, Washtenaw County, Michigan, and that the streets and alleys as shown on said plat are hereby dedicated to the use of the public.

August T. Birk (L.S.)  
August T. Birk

Jennie E. Birk (L.S.)  
Jennie E. Birk

Signed and Sealed in Presence of:

Stanley K. Loveland  
Stanley K. Loveland

Edwin L. Haab  
Edwin L. Haab

STATE OF MICHIGAN }  
County of Washtenaw }  
On this 12th day of December, 1939 before me, a Notary Public in and for said county, personally came the above named August T. Birk and Jennie E. Birk, his wife, known to me to be the persons who executed the above dedication and acknowledged the same to be their free act and deed.

Edwin L. Haab  
Edwin L. Haab Notary Public Washtenaw Co., Mich.

My Commission expires August 12th 1941

DESCRIPTION OF LAND PLATTED: The land embraced in the annexed plat of "A.T. BIRK'S SUBDIVISION," a part of northwest quarter, section 32, T. 2 S., R. 6 E., City of Ann Arbor, Washtenaw County, Michigan, is described as follows: Commencing at the west quarter corner of section 32, T. 2 S., R. 6 E., Washtenaw County, Michigan, and running North along the west line of said section 32, for 132.27 feet for a point of beginning, thence N. 89° 07' 30" E. for 494.82 feet; thence N. 00° 03' 30" E. for 231.14 feet; thence S. 89° 01' 00" W. for 495.06 feet to the west line of said section 32; thence South along said west line for 230.04 feet to the point of beginning.

SURVEYOR'S CERTIFICATE: I hereby certify that the plat hereon delineated is a correct one and that permanent metal monuments of not less than one inch in diameter and fifteen inches in length set in a concrete base at least four inches in diameter and forty-eight inches in depth have been placed at points marked thus o as thereon shown at all angles in the boundaries of the land platted, at all the intersections of streets, intersections of alleys, or of streets and alleys, and at the intersections of streets and alleys with the boundaries of the plat as shown on said plat.

Harry G. Roschbacher  
Harry G. Roschbacher, Registered Civil Engineer.

CERTIFICATE OF MUNICIPAL APPROVAL: This plat was approved by the Common Council of the City of Ann Arbor, at a meeting held January 12, 1940

Fred C. Perry  
Fred C. Perry Clerk.

CERTIFICATE OF APPROVAL BY THE BOARD OF COUNTY AUDITORS: Approved by the Board of County Auditors of Washtenaw County, Michigan, this eighth day of January, 1940

H. Donald Reed  
H. Donald Reed Chairman

Otto D. Luick  
Otto D. Luick

Elmer L. Brown  
Elmer L. Brown

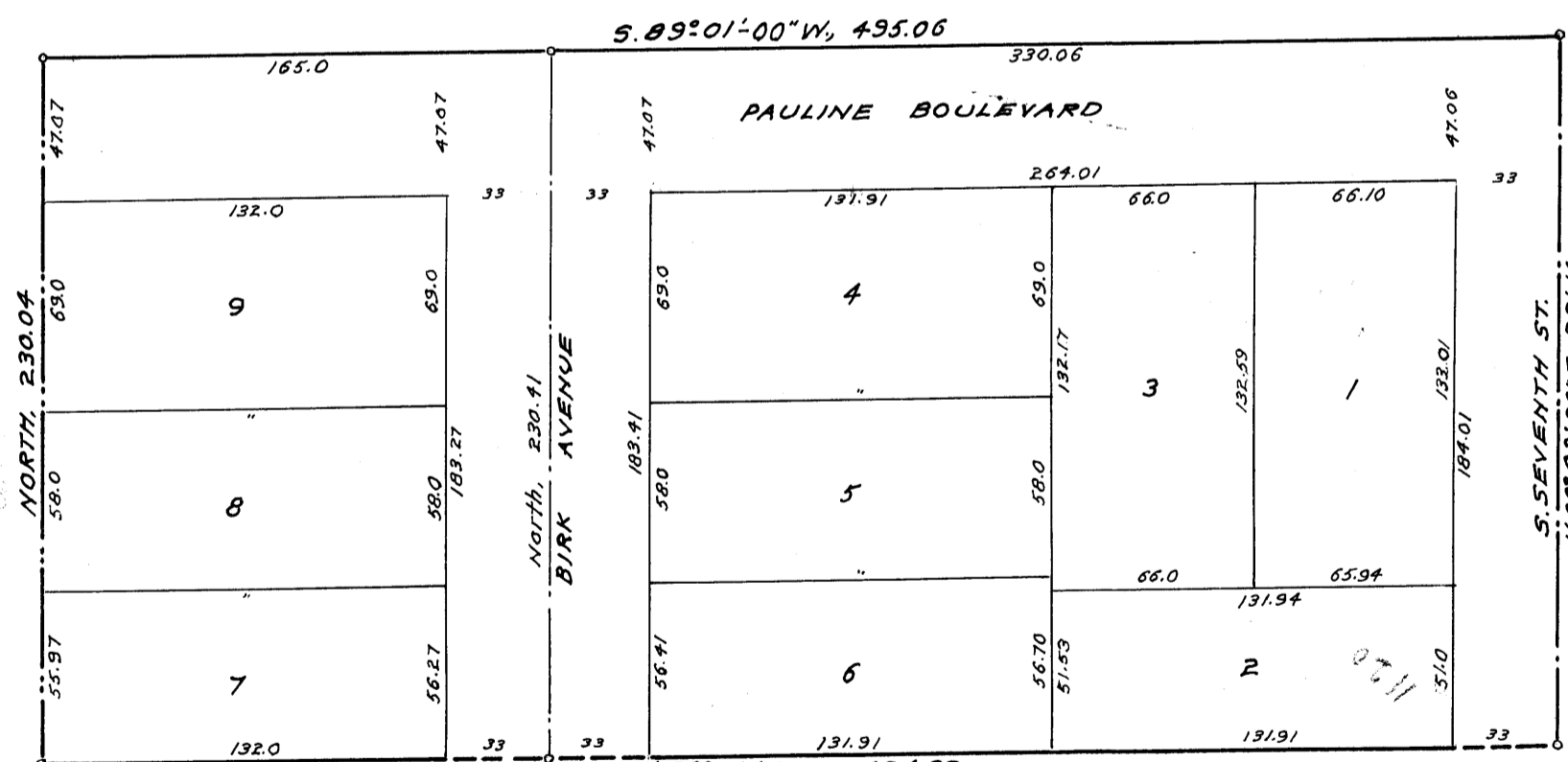
COUNTY TREASURER'S CERTIFICATE RELATING TO TAXES: Office of County Treasurer, Washtenaw County.

I hereby certify, That there are no tax liens or titles held by the State on the lands described below, and that there are no tax liens or titles held by individuals on said lands, for the five years preceding the 12th day of December, 1939 and that the taxes for said period of five years are paid as shown by the records of this office.

This certificate does not apply to taxes, if any, now in process of collection by township, city or village collecting officers.

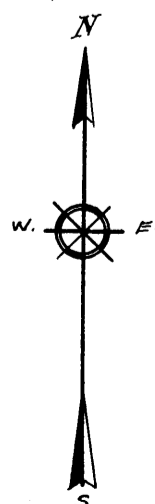
Commencing at the west quarter corner of section 32, T. 2 S., R. 6 E., Washtenaw County, Michigan, and running thence North along the west line of said section 32 for 132.27 feet for a point of beginning; thence N. 89° 07' 30" E. for 494.82 feet; thence N. 00° 03' 30" E. for 231.14 feet; thence S. 89° 01' 00" W. for 495.06 feet to the west line of said section 32; thence South along said west line for 230.04 feet to the point of beginning.

Jennie L. Hatch  
Jennie L. Hatch County Treasurer.



Point of Beginning

ALL MENDING HEIGHTS ADDITION  
(NOT PART OF THIS PLAT)



West 1/4 Corner, Section 32, T. 2 S., R. 6 E.

NOTE: All Dimensions are given in Feet and Decimals Thereof.

(SECOND COPY)

FILED IN AUDITOR GENERAL'S DEPT.

January 29, 1940  
Mayme Jewell Purdy  
Mayme Jewell Purdy, DEPUTY AUDITOR GENERAL

Examined and Approved

January 22, 1940  
Mayme Jewell Purdy  
Mayme Jewell Purdy, Deputy Auditor General

I HEREBY CERTIFY THAT THIS COPY IS A TRUE COPY OF THE MAP OR PLAT RECORDED IN THE OFFICE OF DEEDS FOR WASHTENAW COUNTY.

COMPILED January 27, 1940  
Mayme Jewell Purdy  
Mayme Jewell Purdy, DEPUTY AUDITOR GENERAL

COPY  
Recorder's Office  
Washtenaw County, } ss.

Plat of A. T. Birk's Subdivision  
City of Ann Arbor  
was Recd and this 23rd day of  
January, A.D., 1940 at 11:30 o'clock  
A.M. in Liber 9 of Plats  
on Page 55

Katherine H. Skaw  
Katherine H. Skaw  
Register of Deeds

ORIGINAL ON FILE